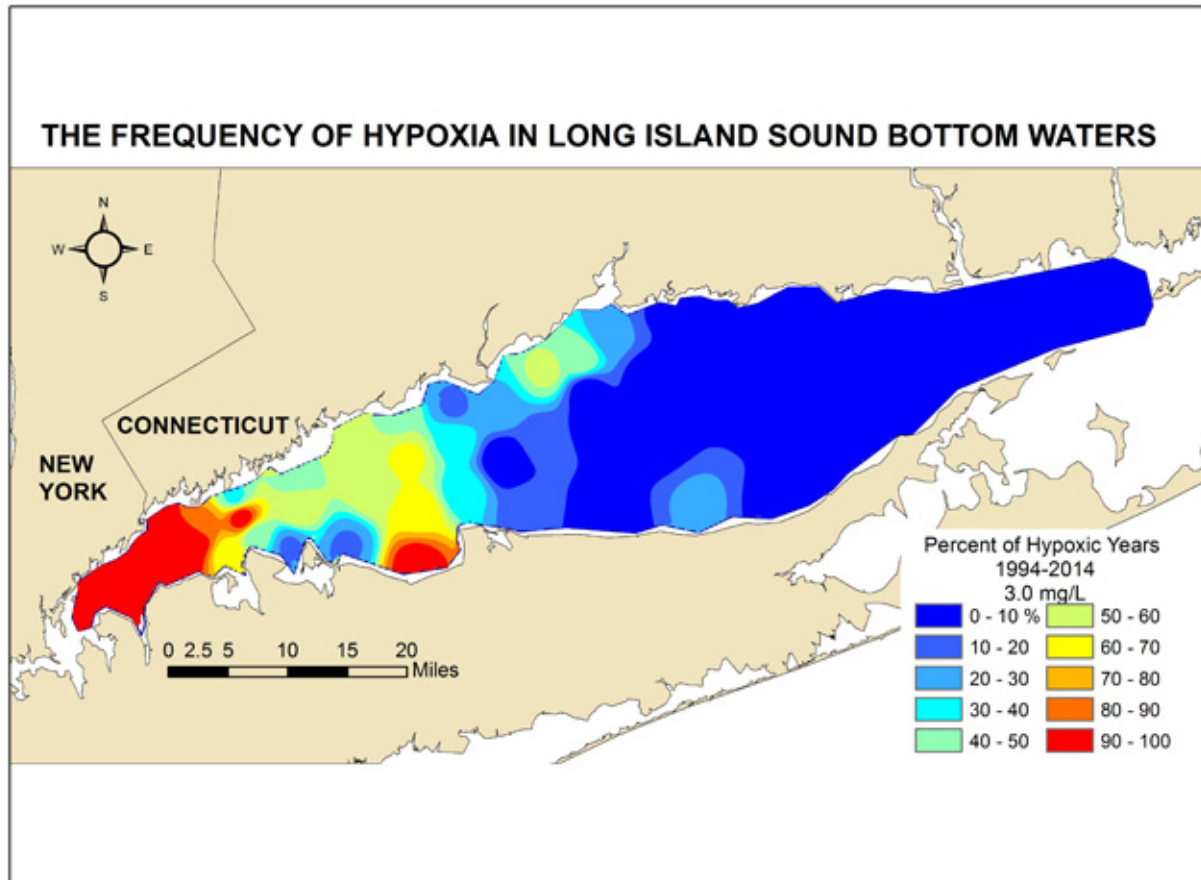


Hypoxia occurs regularly and extensively



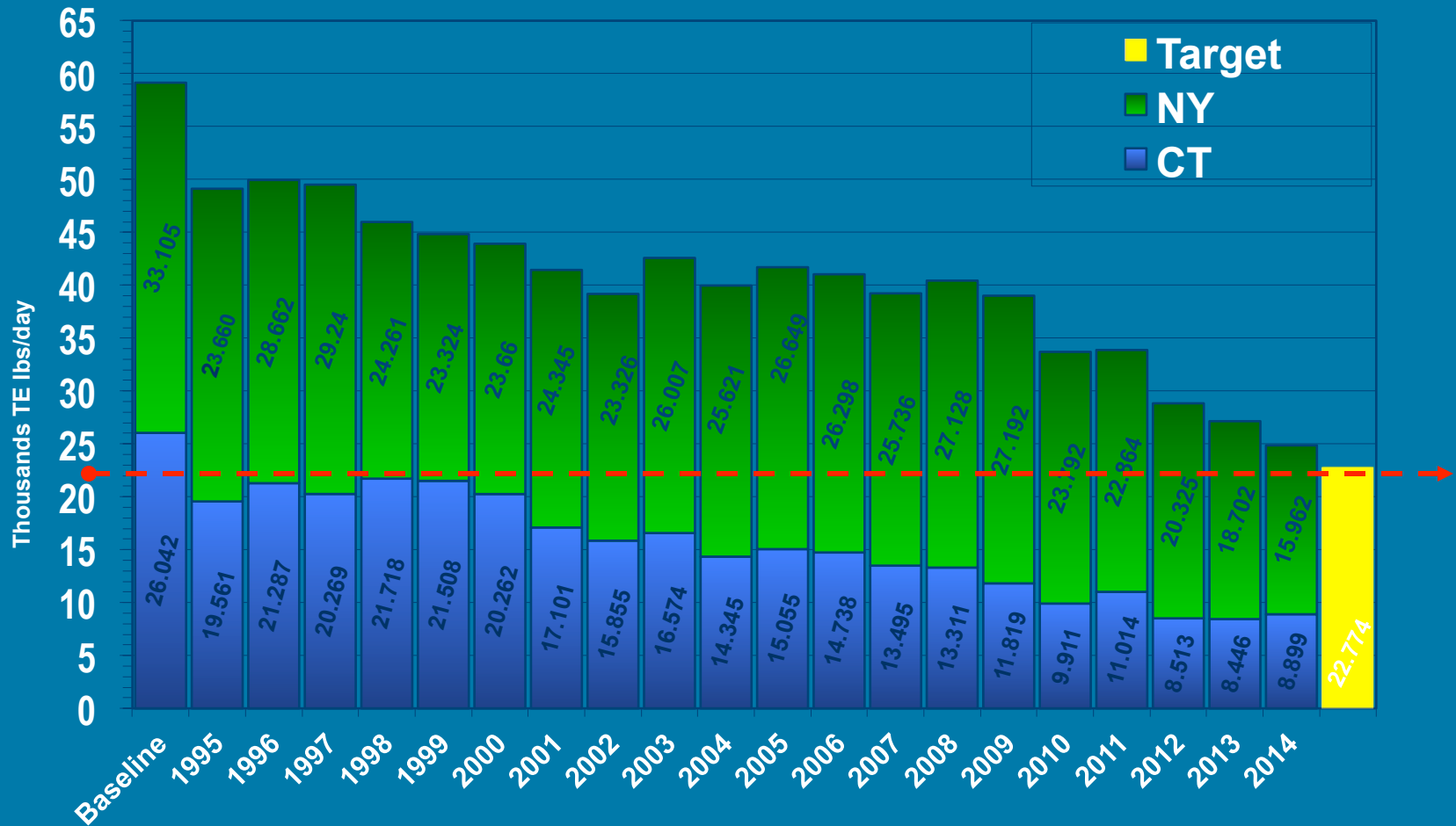
LONG ISLAND SOUND STUDY

A PARTNERSHIP TO RESTORE AND PROTECT THE SOUND

Point Source Nitrogen Trade-Equalized Loads

1995-2014

106 NY/CT STPs



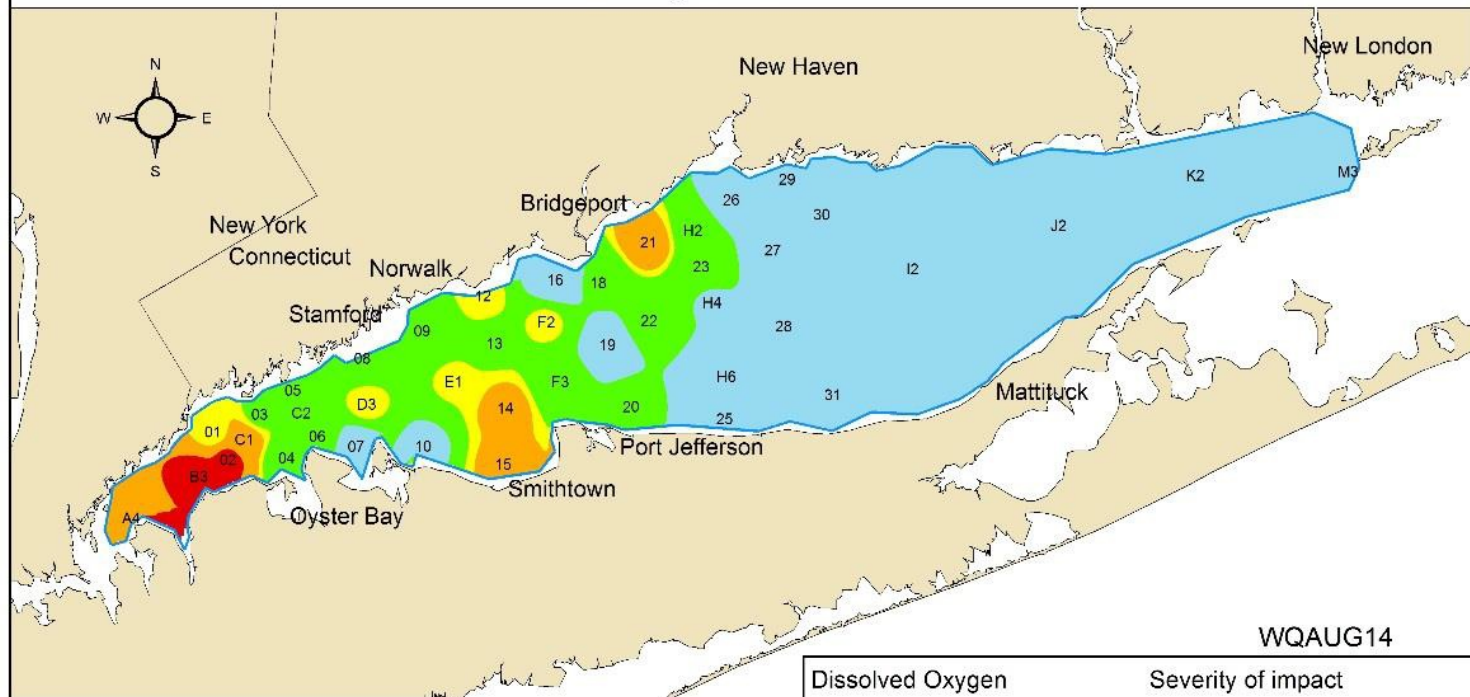
LONG ISLAND SOUND STUDY

A PARTNERSHIP TO RESTORE AND PROTECT THE SOUND



Dissolved Oxygen in Long Island Sound Bottom Waters

4-6 August 2014



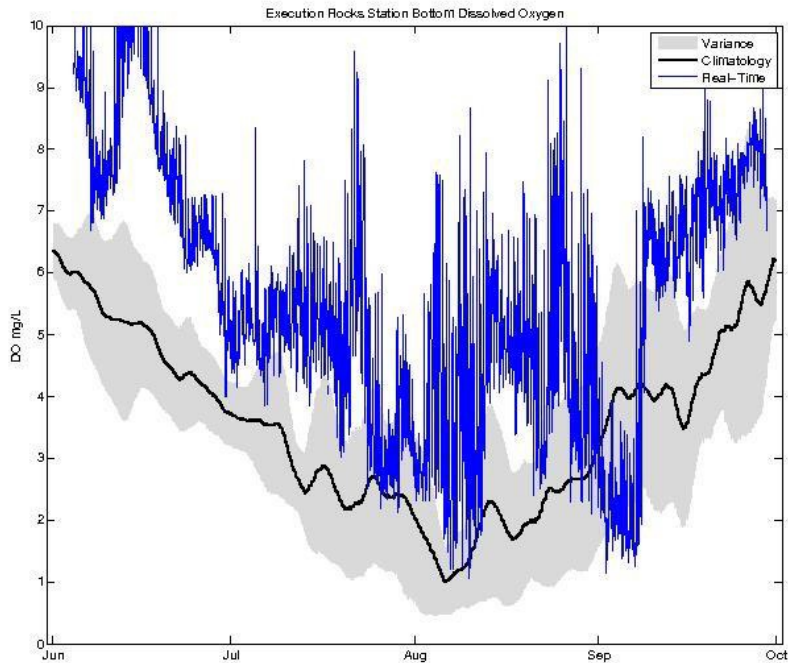
WQAUG14

Maximum areal extent of hypoxia in 2014

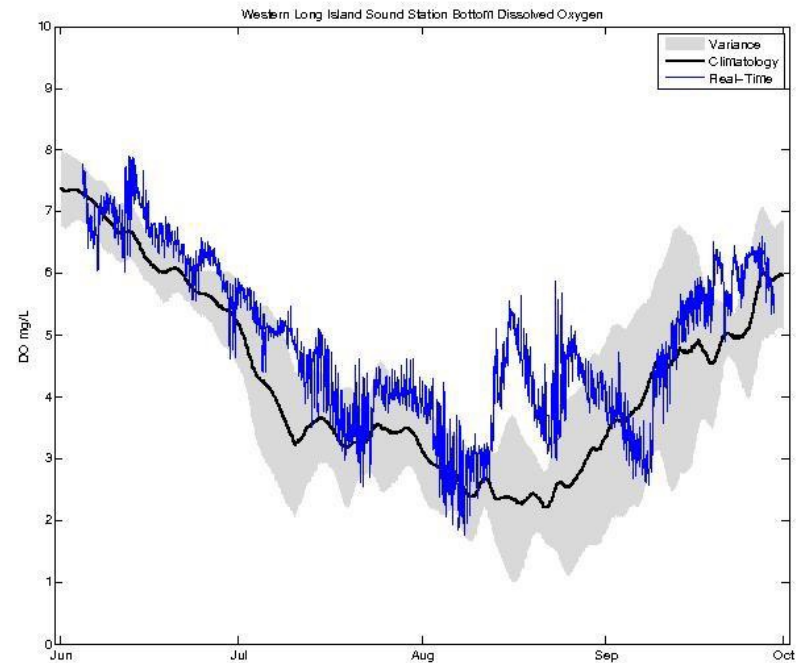
Dissolved Oxygen	Severity of impact
0.0 - 0.99	Severe
1.0 - 1.99	Moderately severe
2.0 - 2.99	Moderate
3.0 - 3.49	Marginal
3.5 - 4.79	Interim management goal
4.8+	Excellent - Supportive of marine life

Summer 2014 DO conditions were generally better than the long term average

Execution Rocks Bottom Dissolved Oxygen



Western LIS Bottom Dissolved Oxygen



Based on LISICOS Buoy Data Collected Between 1 June to 29 September, 2014

Maximum Area/Duration of Hypoxia

